

# C230 EVO-C340-C640

## floor-standing condensing gas boiler

20% Hydrogen



Condensation technology for collective housing.

FRENCH MANUFACTURER  
S I N C E 1 6 8 4

De Dietrich 



## Energy savings and the environment are **now the top priorities**

Whether in collective housing, administrative, office or industrial buildings, the condensation principle enables substantial energy savings **of up to 40%**.

It also offers environmental benefits, with significant reductions in NO<sub>x</sub> and CO<sub>2</sub> emissions.

# A boiler renowned for its performance



## Ultra-compact and lightweight

For easy set-up: 0.54 m<sup>2</sup> footprint  
for 217 kW to 1.53 m<sup>2</sup> for 651 kWh  
188 kg for 217 kW to 568 kg for 651 kWh

## Excellent environmental performance

NOx emissions below 60 mg/kWh  
Sound level below 60 dB(A) for 573 kW

## Large modulation capacity

Modulation from 15 to 100% (for the C640) for optimal fine-tuning of the heat production to the installation requirements.

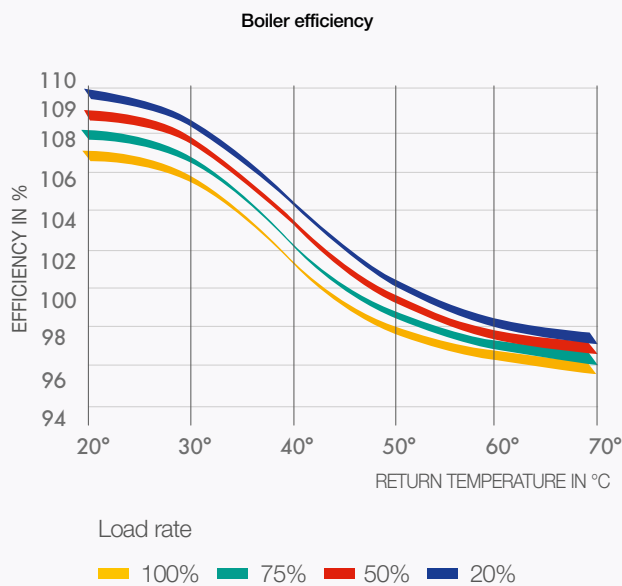
# Condensation is state-of-the-art boiler technology



## Aluminium-silicon: the perfect alloy for optimised generator operation.

- **Complete chemical resistance:** the aluminium/silicone alloy withstands acid condensates produced by flue gases.
- **High resistance to corrosion** thanks to auto-passivation on the surface.
- **Aluminium is an excellent heat conductor** (5 times better than steel).
- **No return temperature constraints:** heat exchange is optimised.
- **Very responsive generator** thanks to a reduced volume of water.
- **Green material** that can be recycled endlessly.

# Simple, economical



**These condensing boilers have been designed to be both durable and easy to maintain, ensuring they offer maximum, long-lasting performance.**

- **Highly durable** thanks to the cast **aluminium/silicon** alloy heating exchanger, which offers high resistance to corrosion and thermal shock.
- **Easy to maintain:** a **self-cleaning** heating exchanger with condensate run-off, quick access to all components via detachable hatches and panels.
- **Reduction in pollutant emissions** thanks to total **premix** burners. Surface combustion and very low modulation minimise start-ups and shutdowns, which cause pollutant emissions.

## Ultra-adaptable

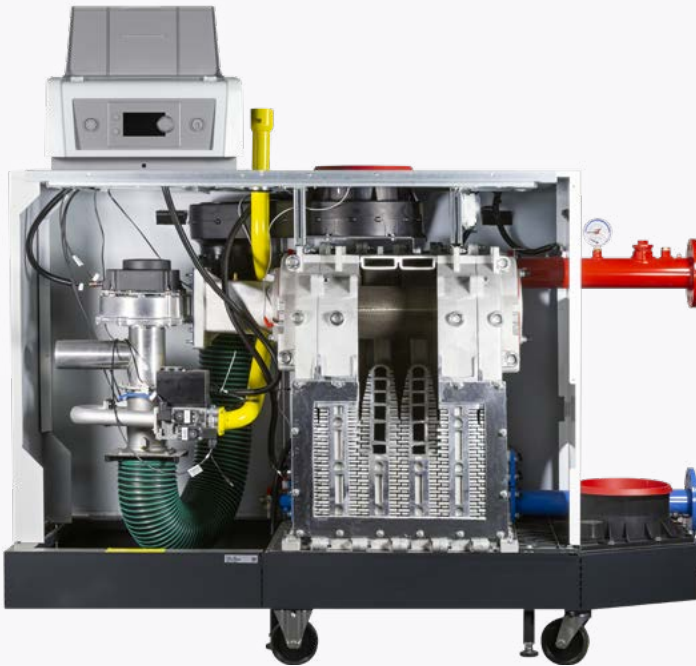


**They are compatible with a wide range of configurations and their specifications mean they can be adapted to any installation requirements.**

- **A broad output range from 18 to 1303 kW**, or higher for cascade type installations,
- **A large modulation capacity** enables heat production to be fine-tuned to meet the installation's requirements,
- **These highly compact units** can be installed in both new and old buildings with confined boiler rooms,
- **They are extremely quiet** and conform to applicable acoustic standards, specifically in residential buildings,
- **With no return temperature constraints**, they enable simple hydraulic installations with maximum use of condensation,
- **The flue system offers multiple connection options**, with forced flue (in line with local regulations) or chimney with small diameter ducts.



# A high-performance boiler



## For C 340 and 640

- New heating exchanger design to obtain a Delta T of 40K.
- Improved self-cleaning capability for the exchanger on the flue gas side.
- 5% more efficient thanks to the compatibility of very high-performance
- Highly responsive boiler thanks to rapid warm-up

## The new Diematic Evolution control system platform



Diematic EVOLUTION

### Simple and intuitive

- Factory-installed control system.
- Intuitive navigation: new control ergonomics.
- Perfect legibility: high resolution colour screen, clear text.
- Instant overview: all the information on the home screen, selected with the rotary button.

### Advanced functions

- Analysis of the situation, clear simple overview for everyday use.
- Access reserved for the installer.
- Integrated troubleshooting system.
- Multi-zone heating management as standard for added comfort.
- As standard, option to control 2 direct or mixed circuits (+1 optional) and 1 DHW circuit.
- Cascade control with up to 8x C240 EVO/C340 or 4x C640.
- 0-10 V control with 3 feedback functions as standard.
- Integrated Bluetooth card.
- Optional remote control with Modbus RTU RS485 to connect the boiler to a BMS.



# Built-in flexibility

for easy installation and efficient reliable heat delivery

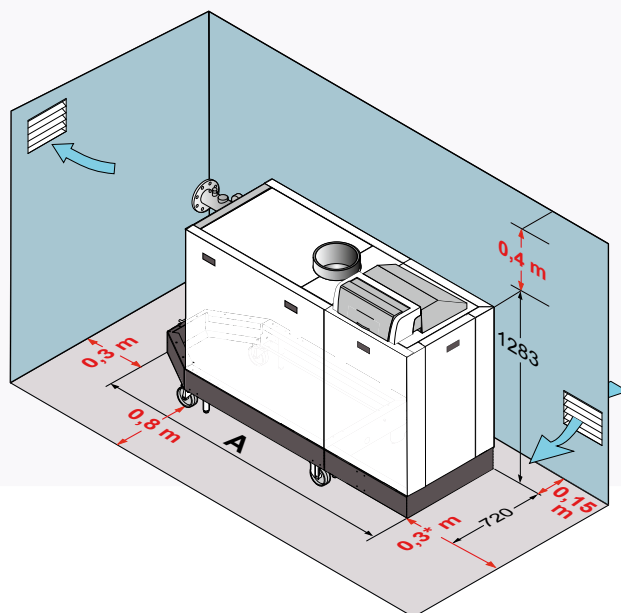
## Future oriented

Operation with no minimum flow  
All our boilers are compatible with  
20% hydrogen blend.



## Easy to install in smaller spaces

Small boiler footprint. Few space  
needed around.



## Best in Class Spare part center

### AFTER SALES SERVICE

Order your parts online via the website

[www.dedietrich-heating.com](http://www.dedietrich-heating.com)

which can be accessed directly from the pro site

# C230 EVO-C340-C640

MODELS - C230 EVO (modulation from 18% to 100%)		85	130	170	210
<b>TECHNICAL SPECIFICATIONS</b>					
Max. nominal output at 50/30°C (Pn) (natural gas H)	kW	93	129	179	217
Efficiency in % LVH	%	97.4	97.5	97.5	97.6
load... % Pn	%	104.3	104.7	105.2	105.7
and water temp... (°C)	%	107.9	108.1	108.3	108.4
Max. flue gas temperature at 40/30 °C	°C	43	43	43	43
Pressure available at boiler outlet	Pa	130	130	130	130
Footprint	m <sup>2</sup>	0.54	0.54	0.54	0.54
Weight (empty)	kg	115	135	165	188

C230 Evo also available in LPG version

MODELS - C340 (modulation from 20% to 100%)		280	350	430	500	570	650
<b>TECHNICAL SPECIFICATIONS</b>							
Max. nominal output at 50/30°C (Pn) (natural gas H)	kW	279	350	425	497	574	652
Efficiency in % LVH	%	98	98.1	98.2	98.3	98.4	98.5
load... % Pn	%	104.8	105.2	105.6	106	106.4	106.8
and water temp... (°C)	%	109.2	109	108.8	108.6	108.3	108.1
Max. flue gas temperature at 40/30 °C	°C	60	61	64	63	66	65
Pressure available at boiler outlet	Pa	130	120	130	150	150	150
Footprint	m <sup>2</sup>	1.31	1.31	1.31	1.53	1.53	1.53
Weight (empty)	kg	366	400	435	497	533	570

MODELS - C640 (modulation from 15% to 100%)		560	700	860	1000	1140	1300
<b>TECHNICAL SPECIFICATIONS</b>							
Max. nominal output at 50/30°C (Pn) (natural gas H)	kW	558	701	849	994	1147	1303
Efficiency in % LVH	%	98	98.1	98.2	98.3	98.4	98.5
load... % Pn	%	104.8	105.2	105.6	106	106.4	106.8
and water temp... (°C)	%	109.2	109	108.8	108.6	108.3	108.1
Max. flue gas temperature at 40/30 °C	°C	60	61	64	63	66	65
Pressure available at boiler outlet	Pa	130	120	130	150	150	150
Footprint	m <sup>2</sup>	2.68	2.68	2.68	3.13	3.13	3.13
Weight (empty)	kg	711	775	841	961	1029	1099

Your installer



BDR THERMEA FRANCE  
S.A.S. with capital of € 229 288 696  
57 rue de la Gare - F - 67580 MERTZWILLER  
RCS STRASBOURG 833 457 211

[www.dedietrich-heating.com](http://www.dedietrich-heating.com)



Ref. 300036021 - 01/2023. Non-contractual photos.

